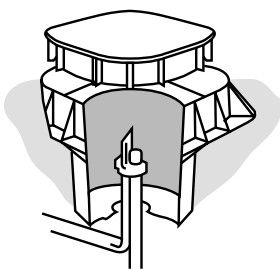
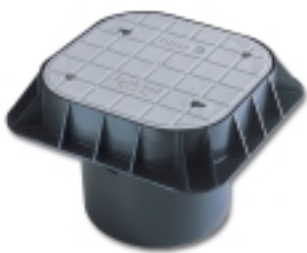


Lightweight inspection pit

Inspection pits and earth rod seals

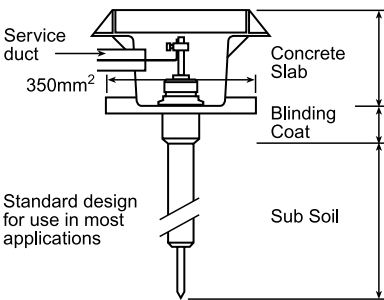


Lid colour	Weight each	Part no.
Grey	1.80kg	PT205
Black (unbranded)	1.80kg	PT309-FU

Other lid colours are available subject to order quantity. Please phone for details.

Accessories	Weight each	Part no.
5 hole earth bar	0.40kg	PT004
6mm Allen key	0.03kg	AK005

Earth rod seals



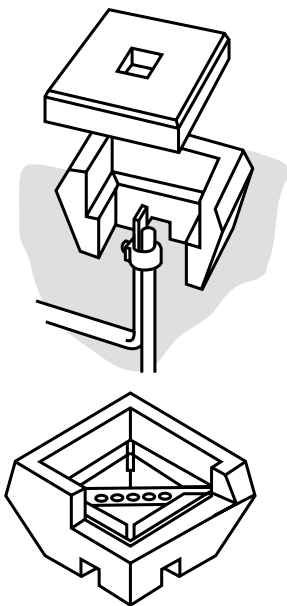
Type	Weight each	Part no.
Single-flange type (for most applications)	2.00kg	ES210
Double-flange type (for deep concrete slab-layers)	3.20kg	ES220

A waterproof earth electrode seal for use in constructions where internal earths are specified.

The unique design allows the seal to be effective across a broad range of rod diameters from a nominal 1/2" to 3/4" rod, by the use of various compression rings and seals. For use with PT205 - lightweight inspection pit.

A separate datasheet is available should you require further information.

Concrete inspection pit



Type	Weight each	Part no.
Concrete	31kg	PT005

Accessories	Weight each	Part no.
5 hole earth bar	0.49kg	PT006
7 hole earth bar	0.58kg	PT007